



info@folkcamp.co.uk
www.folkcamp.co.uk

Extent

Publication June/July 2007



... And so it begins - not with a glorious BANG but with a plaintive whimper! An email slyly slips into my inbox with the glorious news "At yesterday's Council Meeting it was agreed to ask you to produce a "start of season" copy of Extent" - Thanks Mic! Thanks Council!

Gosh you know how to make a guy feel welcome! Start of Season - when's that? I didn't realise there was a "season" ... and if it starts does it do so in mid year!!

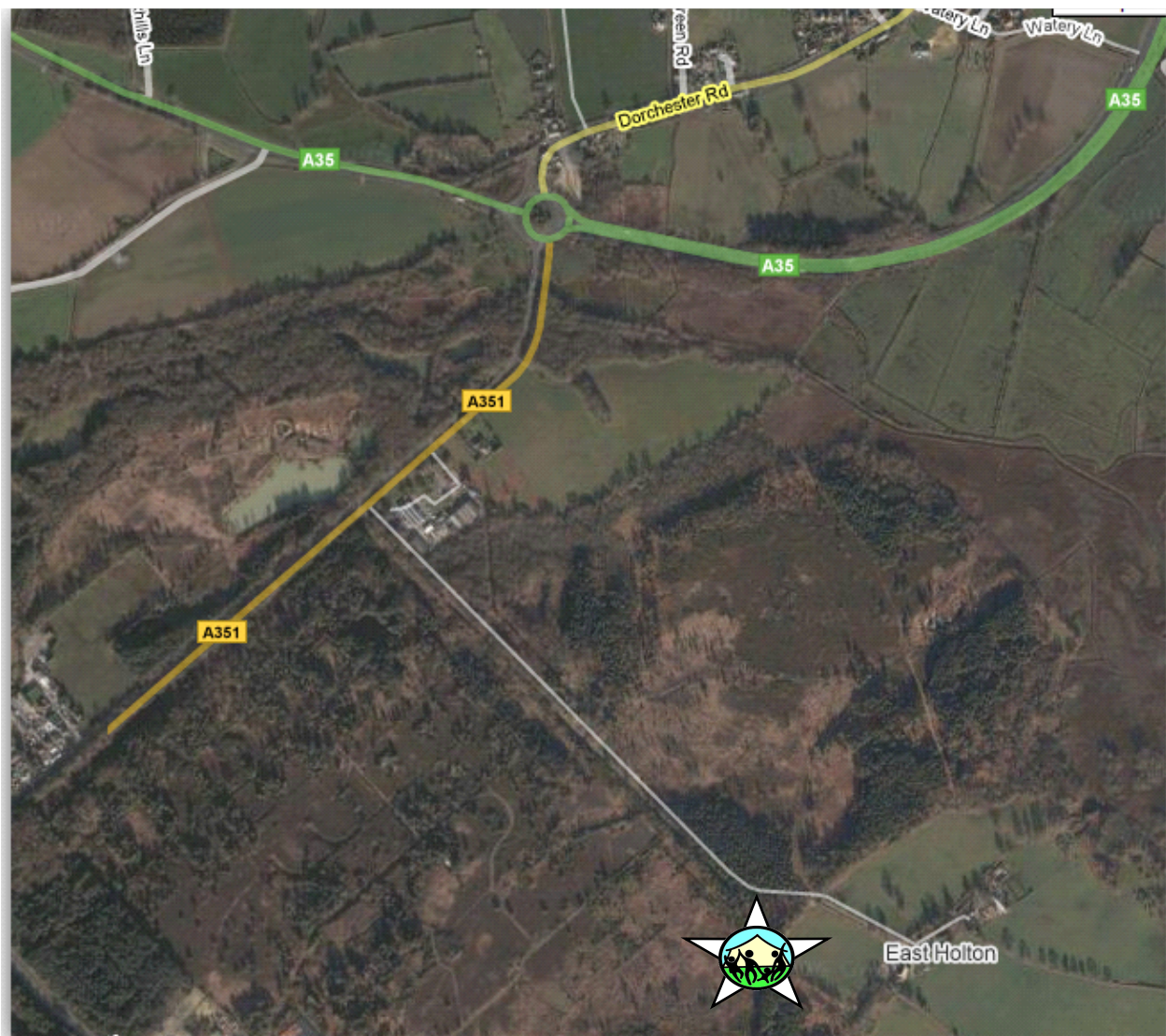
Come on - I thought this editing Extent was going to be a doddle - lots of camps to tell you all about! Tons of input from you - the members! Masses from the Council concerning the future camps - even more from Mic and Paul to fill these virgin pages ... All I would have to do is collate it into some kind of order - bold up a few headlines, add in some clip art and have everyone tell me what a wonderful job I'd done - and what do I get? A request that I mention the reunion in December - great!! That's better - moan over - but I do expect EVERYONE to try to make a contribution to this publication - I like an easy life! (Editor)

This Summers Marquee Camp at East Holton/Poole

It's almost here ... And I've even looked at the map and, inspired by the television program "Coast" last night have consulted the web site for Poole Harbour area (<http://www.pooletourism.com>) more of that later.

Inserting the postcode for the campsite (BH16 6JN) into Google indicates a point a bit to the east of our destination - but close enough to find the correct destination: (the field with the star). And for once - it looks easy to find!

Reading through the tourism website suggests we are but two hours from



London - my guess is that it is two hours from the nearest aspect of London.

One aspect of this camp which wasn't immediately obvious to me is that the "facilities" (toilets and showers) are built in and attached to the sewers

... So we shall be deprived the pleasures of the pit of "sweet violets - sweeter than all the roses ..."!!

I know I shouldn't have to remind anyone that "The Folk Camps staff are all volunteers and do not get paid for their work on camp" so if anything is not exactly to your liking - then it is for all of us to help sort out the problem for the mutual benefit of everyone - including the Camp staff.

Poole Harbour looks fascinating indeed - "a bustling Quay, the best beaches in England and the stunning natural harbour make Poole, Dorset a natural first choice on the South Coast. Poole guarantees you an exciting summer getaway."

The Jurassic Coast - Again!

One interesting thought is that we are nearly 200 million years away from last year's Marquee Camp at Lymstone - last year we camped at the "start" of the Jurassic coast on the rocks of the Triassic Period some 250 to 200 million years ago (before the breakup of the super-continent called Pangaea!).

This year we find ourselves at the young end of this stretch of coast line - only 140 to 65 million years old! The Purbeck rocks (to the right of the harbour mouth looking out to sea) holding both dinosaur and early mammal records. For those who didn't manage to visit Lulworth Cove and Durdle Door during the Puddletown camp - they are less than 20 miles away to the west!

A quick explore of the Poole Website (<http://www.pooletourism.com>) will find a multitude of activities - boat trips all over the place including to Brownsea Island (National Trust) - celebrating the centenary of the first Boy Scout camp back in 1907 (and let's be honest many of us probably came to camping via the influence of the Scouts and Guides - so in a way they are celebrating our origin as well!).

Spoilt for Choice!

For the beach lover - you will be spoilt for choice! There are cycle tracks, established walking trails and for those who like a stroll with a difference a "Ghost Walk with Granny Cousins" in Poole! There is



even a selection of mini-bus tours (<http://www.discoverdorset.co.uk>)- along the coast and others taking in Salisbury, Stonehenge and the New Forest - might be good for a damp day !

For anyone who has any doubts that this is a great place to holiday - visit the Poole web site - there are nine pages of attractions to explore including: The Abbotbury Swannery, Beaulieu, Corfe Castle Model Village, Dinosaur Museum (Dorchester), Exbury Gardens & Steam Railway, Ginger Pop Shop, Lulworth Castle & Park, Monkey World, Oceanarium, Terracotta Warriors, Tutankhamun Exhibition, Wimborne Model Town! And that's just a taster - add on all the pleasures of just "chilling out at camp" and I think it's going to be pretty darn good!!

To enhance this I think we should have a rule that all mobile phones in the camp are turned off during daylight hours! Tell the office that you are only allowed to use a mobile phone after the sun has "gone beneath the harbour bar" - which in my family, was when the first drink of the day could be taken ... Presumably in the Harbour Bar!!



Oh yeas! Oh yeas!

Hear ye! Hear ye! Notes and items relating to the FOLK CAMP SOCIETY

Bookings

As you may have gathered from the web site - the four weeks of the Marquee Camp at Poole and the week long village hall camp at Bryn Pydew - are all fully booked - with a waiting list for people still hoping to sign on.

There are still places at the summer week at Halsway Manor - but it does seem, from looking at the web site (<http://www.members-only.org.uk>) that bookings are up - amazing when a few years ago the talk of the Society future was all doom and gloom! No matter how you view it, SOMEONE HAS BEEN DOING SOMETHING RIGHT!! So raise your glasses and toast our hard working Council, the permanent Officers and all the Leaders, Wardens, Caterers and Musicians that help make our holidays so special.

REUNION 2007

There is of course one special day when we all have a chance to meet some of this wonderful bunch - to thank them and to share their vision of the current position of the Society and to contemplate its future. This is the one date to put in your diaries NOW and is the REUNION 2007 on **SATURDAY 1st December**

at the Village Hall, Wing, nr Leighton Buzzard, Beds an 11am to 11pm day to share with folk campers (with no spuds to peel - or cooks' washing up!).

Programme:

Photoswap & Coffee from 11 am

Lunchtime Music down the pub from 12.30 pm
Snack at Kemps' Kitchen or join the informal music session at The Cock.

Annual General meeting 2.30 pm

All welcome to attend the **AGM** of Folk Camps Society Ltd and may speak but only governing members may vote. Review the report and accounts, meet the new council members and make your voice heard during the informal discussion after official business is concluded. A crèche will be running during the AGM.

Reunion Ceilidh 7.30 - 11.00 pm (no bar, so BYO)

Admission £6 adults (tickets on the door) unaccompanied under 16s are free!
Dance the night away with the music of **"Fiddlin' Around"** (www.fiddlinaround.net) our very own Bob Tracey and Brian Stone, with Andrew King and Malcolm Cole produce high energy dance music.

I do suggest that if you want to really feel part of the Society - with a vote at the meeting - then become a governing member (£1/year - minimum £5). You can download an application form from the members' website. The strength of a Society can be seen in the commitment of its members - and here the price of showing that commitment is minimal but the value to the Society is immense.

Council?

Of course, considering the intelligence and talent of the average folk camper - some of you might consider standing for Council. No longer a sitter in the shadows - join the movers and shakers in the Society! If you'd be interested - have a word with Paul Weir (our Chairman: paulweir@folkcamp.co.uk).

Emails

If you've changed your email address recently (or change it in the future - then PLEASE tell Mic Spenceley (info@folkcamp.co.uk)). I know this is obvious - but I also know from the experience of running email lists for various organisations that people change their emails and then simply vanish from any attempt to contact them ... So - PLEASE TELL MIC your new email address!

Extent

Please send me your thoughts re Folk Camp, your news, stories, poems, tunes, songs (extent@folkcamp.co.uk) - we can then turn this little missive into a real source of communication between campers and between the camps. In particular details of "hatch, match and despatch" - achievements - like degrees, music exams, recordings you've made, bands you play in - why shouldn't we share in you successes - after all we're almost family!



FIVE WEEKS AND COUNTING!

Ok, ok - let me think - it's raining - the local Primary School is having their annual Summer do - the dogs have just sogged in from the garden growling they wouldn't send a knight out in that - so I guess Summer is really here!!

I've just been asked to produce a Start of season Extent ... So maybe the "season" has already started! Oh, I've just consulted the diary and suffered a mild feeling of total panic ... Summer IS here - and FOLK CAMP is less than five very busy weeks away - HELP - so soon and so much we have to do!! Where, oh where to start ... What do we need to be ready in time to go to camp?

Camping - we need to find the tent - and check that it is still fit to live in! Thinks "it's in the garden somewhere" - well we have a trailer tent - and last seen it was parked near the rosemary bush. (we did think to put it safe and dry in the attic - but we couldn't get it through the front door.)

Vango dead

Ok - we'll have to find it and open it out. Now that's an anxious moment every year - well I know we've sent off the money for the camp - so if there is something wrong with the tent we are going to have some mega problems. I am still haunted by the memory of opening the bag of our long loved Vango 5 about a week before going camping and catching a nose full of a very strong musty smell that said "Vango dead - new tent needed"!

I could have sworn it was really dry when we packed it away - or was that the year before? A brief investigation confirmed that here was a tent that would never grace a campsite again! This was the point where we went out and bought our first trailer tent - brilliant - we are now on/in our second - exchanged because we wanted to enjoy a little more space as my daughter got older.

Grey monster

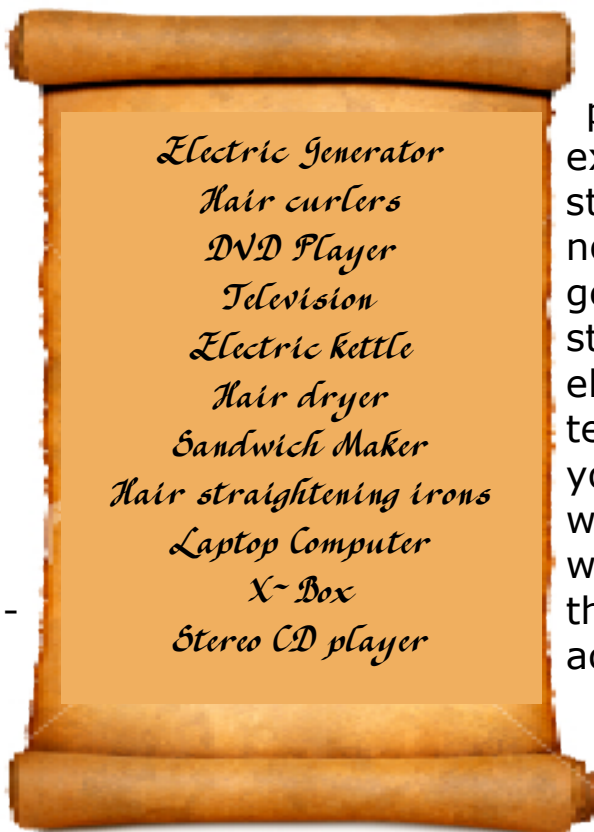
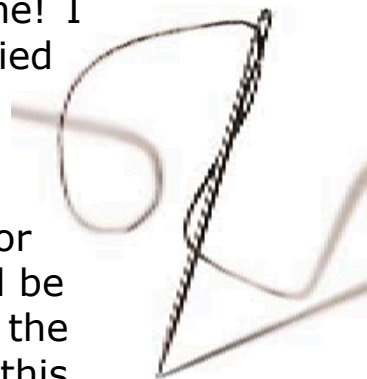
So, first off - find the tent near the rosemary bush and examine it with caution - a couple of years ago we found it was ready occupied - by a colony of wasps! Assuming an absence of buzzing - get it onto the front lawn (lawn!! - patch of grass) and open it for inspection - ditto with the grey monstrosity we purchased last year to house my daughter and her friends. Gosh - I hate this moment - as I suddenly find that all those little repair jobs I meant to do before winter



last year - are still there urgently needing to be done! I think that means next weekend is going to be occupied with tent inspections!

Assuming a weather and road worthy tent - what's next? Ah - list all those items we simply have to take or the period of the Folk Camp will be

the most miserable of the whole year - I hate this part of the job - having to explain that hair is perfectly all right if it isn't straightened every day ... And that there is no way that I'm going to buy an electric generator for our tent so that hair dryers, straightening irons, laptops running MSN, electric kettles, waffle irons, sandwich makers, televisions, DVD players can be used! Mind you a small fridge to keep the beer cool would be nice (oh - I've just been reminded - we have a small gas fridge in the trailer tent that's why we bought it - sadly we've never actually managed to use it!!).



Electric Generator
Hair curlers
DVD Player
Television
Electric Kettle
Hair dryer
Sandwich Maker
Hair straightening irons
Laptop Computer
X-Box
Stereo CD player

To which God do we sacrifice?

That's all very well - but what about the things that we will have to take - the cutlery bag - now if I recall at the end of last years camp out of two complete canteens of cheap cutlery we have been reduced to three odd knives, and assortment of forks and were reduced to eating pudding and porridge with either teaspoons or a table spoon! As for plates and cup - I think we were alright there - they were too ghastly dull for anyone to mistake them for theirs - and they were too big to get thrown into the washing up pit with the dirty water! (I sometime speculate on a future archaeologist stumbling on to one of our washing up pits and speculating to which God we were sacrificing our cutlery! Sorry, too much Time Team).



What else ... Clothes of course - selected and packed closer to the great day - only to be re-selected and repacked the night before we go because the weather forecast has predicted torrential rain for the next two weeks. Actually, I'm



Paddington in his wonderful-
Wellington Boots

rather pleased with my self - I purchased a pair of "Aqua sandals" - designed and made to wear in water - brilliant - now I can wander off the toilet block (normally about 6am) without having to clump about in Wellington boots (actually we found that gardening boots - sort of ankle length were more comfortable).

Lost listing!

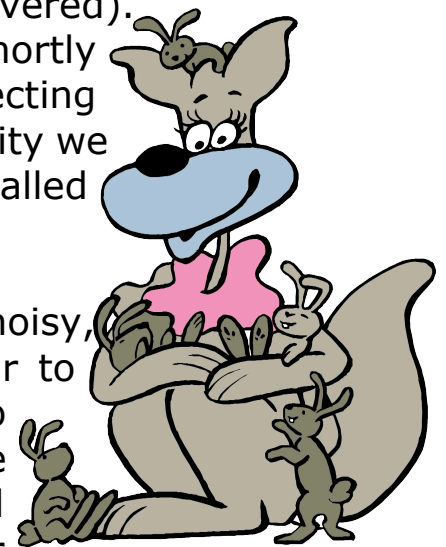
I suppose, having discarded my pretend list (see previous page) it's time to get out last years list - except we've almost certainly lost it! Never mind - grab a few sheets of paper and nail them to the kitchen cupboard door - and head it us "Things to take to Folk Camp" with a pencil on a piece of string taped to the corner. Inspiration strikes at odd moments - and no more so than while waiting for the toast to burn. Mind you I know when we come to gather the items on the list - certain items like "eggs" and "shoe polish" will cause slight confusion.

Ok what else - can't do anything with the tent (even if I recalled where it actually was) as it's still raining and I'm sitting here tapping away with the dogs twitching and grunting in their sleep - chasing rabbits I guess - not that they have ever had the chance to chase one! Still, they know the theory - and when they catch them - they would give them a darn good licking!

Jaws of mercy!

Actually, they are another problem - the past couple of years we've taken our Sheltie Holly with us to camp! Holly is a very gentle, well behaved, quiet dog with no bad habits (that we've discovered). Holly gave birth to three puppies last September shortly after we came home from camp (no she was expecting them before we went!). In a moment of total insanity we kept one of the puppies - a very beautiful bitch we called Cara.

Cara is everything her mother isn't - she is noisy, bouncy, destructive - but quite wonderful. I fear to take her to camp though - she is second cousin to a shark - crossed with a pair of scissors and the "Jaws of Mercy" that firemen use to open crashed cars. When she isn't barking - she is chewing - her mother, my leg, bones, toys, sticks, books, records, stair carpet, cushions ... And yes I have tried that "Chew stop" stuff - a foul (I assume) tasting liquid you spray on items you don't want the dog to damage ... Cara is



really delighted when I use it - I think she thinks I'm marking the items I want her to chew!

So - if we can find someone to look after them - maybe no dogs for us this year - Cara on the loose could chew down a line of guy ropes like a hot knife through butter - and we've got to think of all the other campers before we impose our family terror on them. Mind you the way things are looking at the moment they will, I fear, be coming! Now I wouldn't want anyone to worry - they will be kept tethered and anyway, their biggest fault is that they just LOVE people and they are not shy about showing it. At the worst - if they got free their sheepdog instinct might kick in - and we'll find they have herded all the children into a neat flock!!



To take or not to take?

Sorry, distracted there for a moment - let's start that list for the cupboard door : tent(s), bedding, cutlery bag/plates/mugs/wine glasses, clothes, boots, raincoats, lights/torches (I notice the solar garden lights are appearing more and more each year - a practical way to help prevent people tripping over your guy ropes!).

What else: musical instruments, music, games, books - wet weather occupations (also good for very hot weather) and a few tools to repair things can be useful - dissecting a concertina with the screwdriver on a penknife is possible - but not good practice!

Oh and a second list I think of all the things I have forgotten in the past : medicines, swimming costume, suntan lotion, the key to allow me to remove the top box from the car, duck tape, first aid kit, the spare cable to connect the car to the trailer, shaving cream, toothbrush and the disgusting T-shirt I wear nearly every Friday night party!

Musical instruments - ah which ones shall I take - the guitar of course - and the concertinas - do I take the melodeon ... I do every year with the avowed intention to learn to play the thing - Doug Brown has patiently taught be a new tune every year - and every year I've promised to practice, practice, practice - and every year I have to go, melodeon in hand and apologise to Doug - so - If you're at the first couple of weeks a Poole - sorry Doug! Mind you I did buy another tutor the other day at the Thaxted Ring Meeting which means I now have more melodeon tutors than good intentions - my enduring hope that they will teach me how to play by

simply being in the same room Silly! no it's not silly - I can put on weight by standing too close to a potato ...!

Oh look, the rain has stopped and the sun is starting to come out and I guess I'm a little more prepared for this year's FOLK CAMP indulgence (I can almost taste the fruit crumble and custard [quick plea from a camp glutton - make more custard!!]) than I was this morning. I've got the start of my camp preparation list - just need to add washing kit, towels, medicines, suntan lotion, maps, instructions Oh well - we'll get there somehow - we always seem to - now where is that rosemary bush?

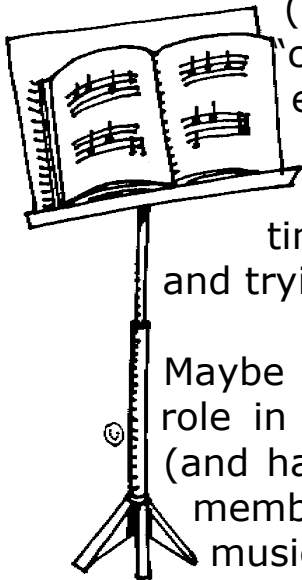


If music were the love of food ...

And music - for me the prime joy of attending camp is to spend hours playing with and learning from the best. I know over the years I have championed the idea of having some music to play in preparation to coming to camp - but can I get any of the Camp musicians to provide a comprehensive list? (apart from Emily Weir who produced a list of some of the pieces we used last year - for which many thanks). I can understand why since part of the pleasure of their job is to introduce us all to new tunes - and indeed one of the best challenges of the Camp is to get your head and fingers around new tunes.

On the other hand there is a basic repertoire of music that we play to death every year - most of which appears in the "Join the Band Book" - the EFDSS book compiled by Barbara Wood - simple parts to help everyone to join in and play - tunes that we should all know and be able to play without thinking (and without distracting the learner next to us).

However, every year, in the weeks before going to camp, I take out my copy and try to play through the tunes! After a couple of pages I simply have to give up - there is too much stopping and page turning! SO ... More for my own use, I have taken an index of tunes from the Join the Band Book that we always seem to play - found copies in the public domain

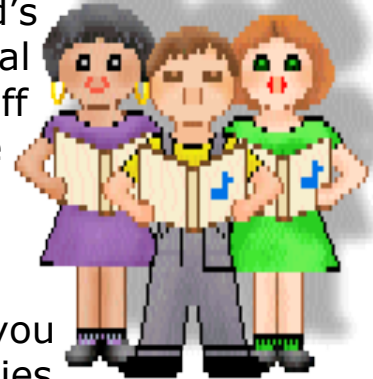


(normally from ABC music format sources) and created "composite" music sheets containing 6 or seven tunes on each. These reside happily on the music stand and are ideal for a ten minute "play through" - what at the Concertina Group I go to calls a "warm up set" - three times through each tune at approximately "dance speed" - and trying to move smoothly from one tune to the next!

Maybe I should explain that, apart from having the Chairman's role in the International Concertina Association I also prepare (and have prepared) the Music Supplement that we give to our members along with the Association Magazine. So preparing music like this is second nature to me so ...

Downloadable resource

I'm not suggesting that everyone should try them - however, I shall ask Mic if he will put the three sheets I've done so far (as pdf files) on the web - where anyone who wants to use them as a resource can do so - I shall also supply some multiple tune sheets from my International Concertina Association Archives - designed to be a country dance resource ... Oh and the dots for Sir Jimmy Shand's "ightsome reel" as noted down from the original 78rpm record. How useful anyone will find the stuff I don't know - but it's a starting point - with care and contributions from you all I'm sure we can refine it to a useful resource.



So, don't be shy if you have some good tunes that you think we would all benefit from sharing - bring copies to camp - or send them to me and I will do what I can ...

And even better if they are your own compositions ... And while I'm not much of a dancer - if the tunes serve a dance - all the better.

.... My ears would be full of crumbs!!

A THOUGHT!

Some years ago I was pounced upon as I entered camp by an enthusiastic crew who asked "Can we do a Mummings Play this year?" Indeed we could and did and wonderfully funny it was too. The thought is - had I not brought along some scripts the project wouldn't have happened - so if you've a fancy to do something special at camp - then maybe do a little research on the subject - and bring along some resources! Last year I was asked about doing a Mummings again - but had no scripts - and it was far too hot to sit down and write our own!

SUGGESTIONS

In the last copy of Extent I challenged all members of the Society to come up with some suggestions that might make Folk Camp even better. I can only assume that every one is delighted with the facilities ... Some ideas do come to mind:

1. Closed and insulated cold drink containers with the drink available via a spigot. Advantages: cold drinks, less attraction to wasps, small children don't have to pick them up to obtain a drink.



2. Hand sprays on the rinsing sink: advantage - single-handed use and automatic cut-off of water.

3. A mechanism (a simple ball cock valve!) to fill the boilers automatically as the hot water is drawn off - advantage: people wouldn't have to fill them - they then wouldn't run low or dry!

4. Some 5 gallon water containers for the showers - so you can take extra water into the shower tent for soapy emergencies: advantage : not having to stagger out half washed and half naked to get a refill - and not tempted to take in two shower units!

5. A marked off area outside the marquee to be used as a bicycle park for the children's bikes - it's easier to ask people to put things in a certain place - that to ask them not to leave them somewhere (mainly in the entrance to the Marquee) ... And if they are left there is a legitimate place to move them to!

6. A good supply of Lemon Ajax Scourer - brilliant at shifting burnt on residues on the cooks' washing up -advantage: turns a chore into a pleasant challenge - a couple of narrow paint scrapers could be handy!

Extent is a publication of the Folk Camps Society Ltd, a company limited by guarantee (Reg No 931434) and a registered charity (No 255901)

Head Office-

Mic Spenceley
Folk Camps Society Limited
43 Mill Street
Tonyrefail, Porth, CF39 8AB
Info@folkcamp.co.uk
0208 12321 36

Editor

Jon McNamara
17 Nursery Road
Bishops Stortford
HERTS CM23 3HJ
Extent@folkcamp.co.uk
01279 656664/ 863353